

Photometric Report

MAC Encore Two – Narrow

MARTIN PROFESSIONAL R&D OPTICAL LABORATORY

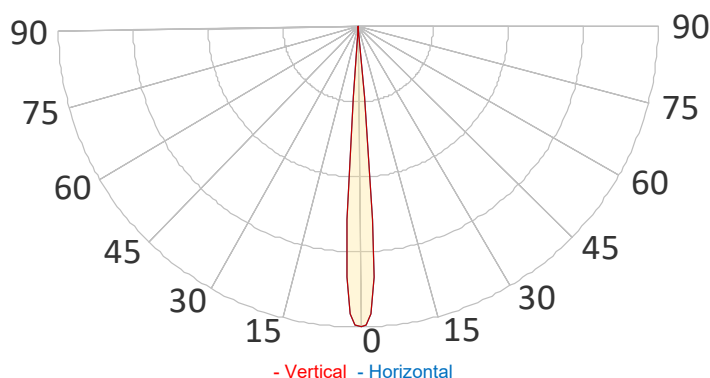
GENERAL SPECIFICATIONS

Total Fixture Output:	21000 lm
Light Engine Output:	57000 lm
Efficacy:	24.4 lm/W
Lens Option:	N/A
Beam Angle (50%):	5.1-51.9°
Field Angle (10%):	5.7-53.6°
Cut-off Angle (3%):	5.9-53.9°
CRI:	90 (+/-3)
TM-30 Rf:	90 (+/-3)
TM-30 Rg:	100 (+/-3)
TLCI:	90 (+/-3)
Color Temperature:	5600K (+/-300K)



SAMPLE MEASUREMENT

POLAR PLOT

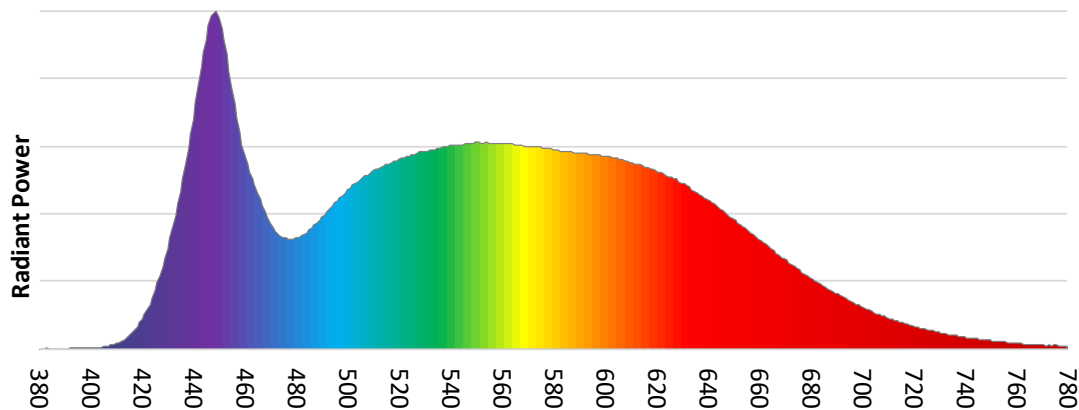


Catalog Number:	MAR-90250600HU
Measured Output:	13301 lm
Measured Peak:	701617 cd
Consumed Power:	505 W
Efficacy:	26.3 lm/W

Beam Angle (50%):	9.1°
Field Angle (10%):	11.2°
Cut-off Angle (3%):	11.8°

Measurement Condition:	
Ambient Temperature:	25° +/- 5° C
AC Supply:	230V/50Hz
Fan Mode:	Regulated Low
Fixture Warm-up Time:	30 minutes

SPECTRAL DISTRIBUTION



Photometric Report

MAC Encore Two – Narrow

TM30

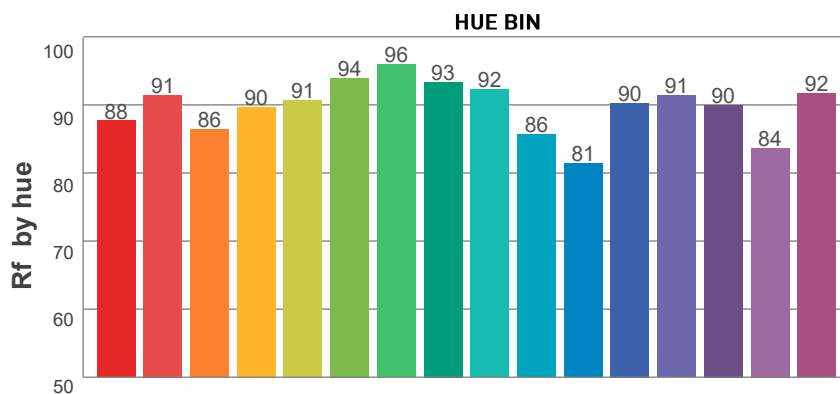
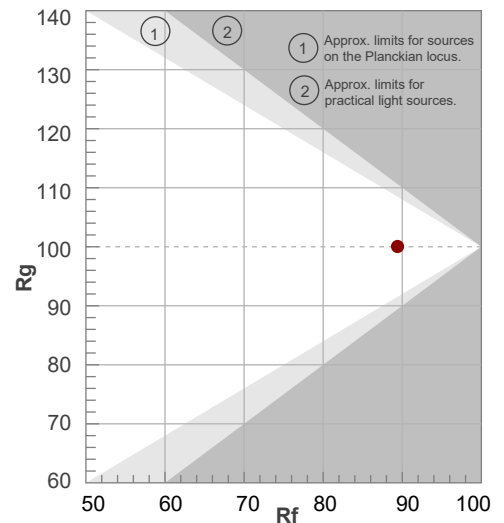
Rf 89.4

Fidelity index Rf

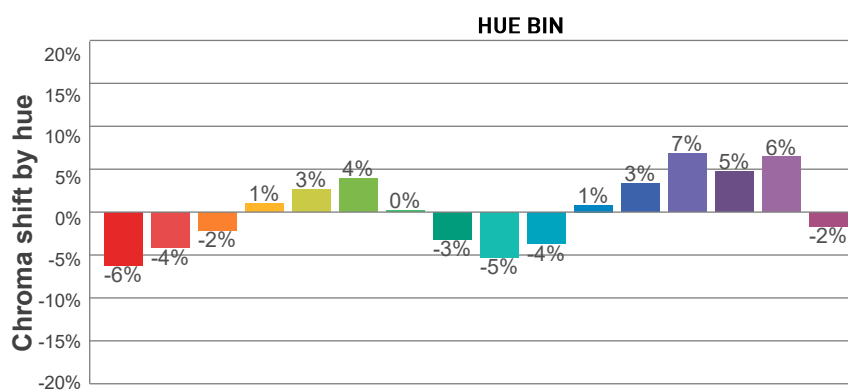
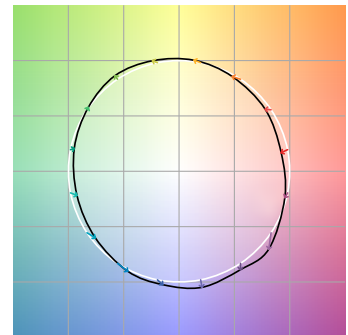
Rg 100.0

Gamut index Rg

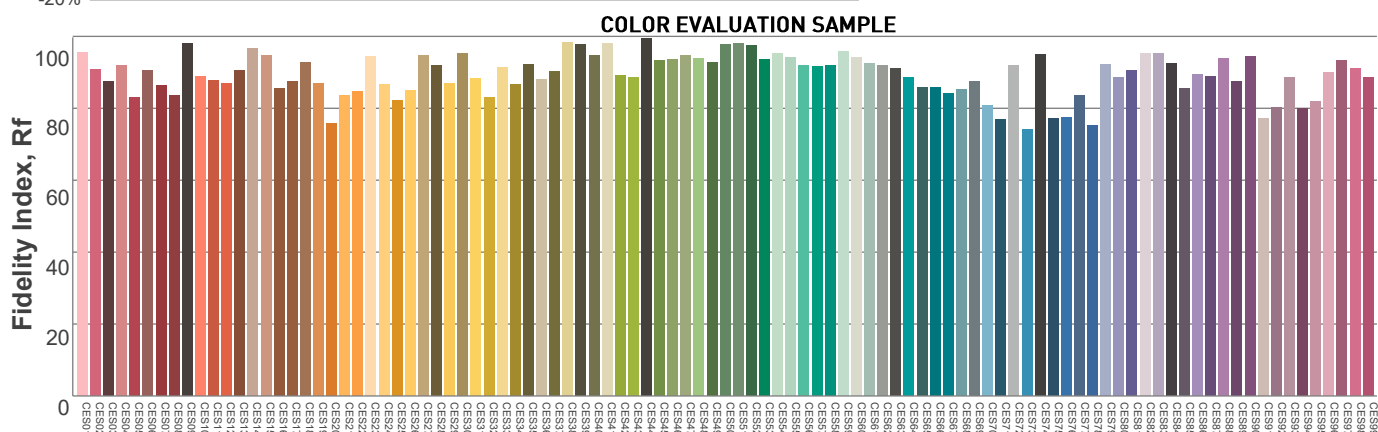
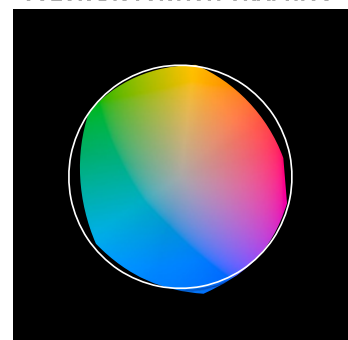
Hue Bin	R _f	Graphic shifts (%)	
		Chroma	Hue
1	88	-6%	-2%
2	91	-4%	3%
3	86	-2%	7%
4	90	1%	6%
5	91	3%	4%
6	94	4%	0%
7	96	0%	-2%
8	93	-3%	-2%
9	92	-5%	3%
10	86	-4%	8%
11	81	1%	12%
12	90	3%	6%
13	91	7%	0%
14	90	5%	-3%
15	84	6%	-13%
16	92	-2%	-5%



COLOR VECTOR GRAPHICS



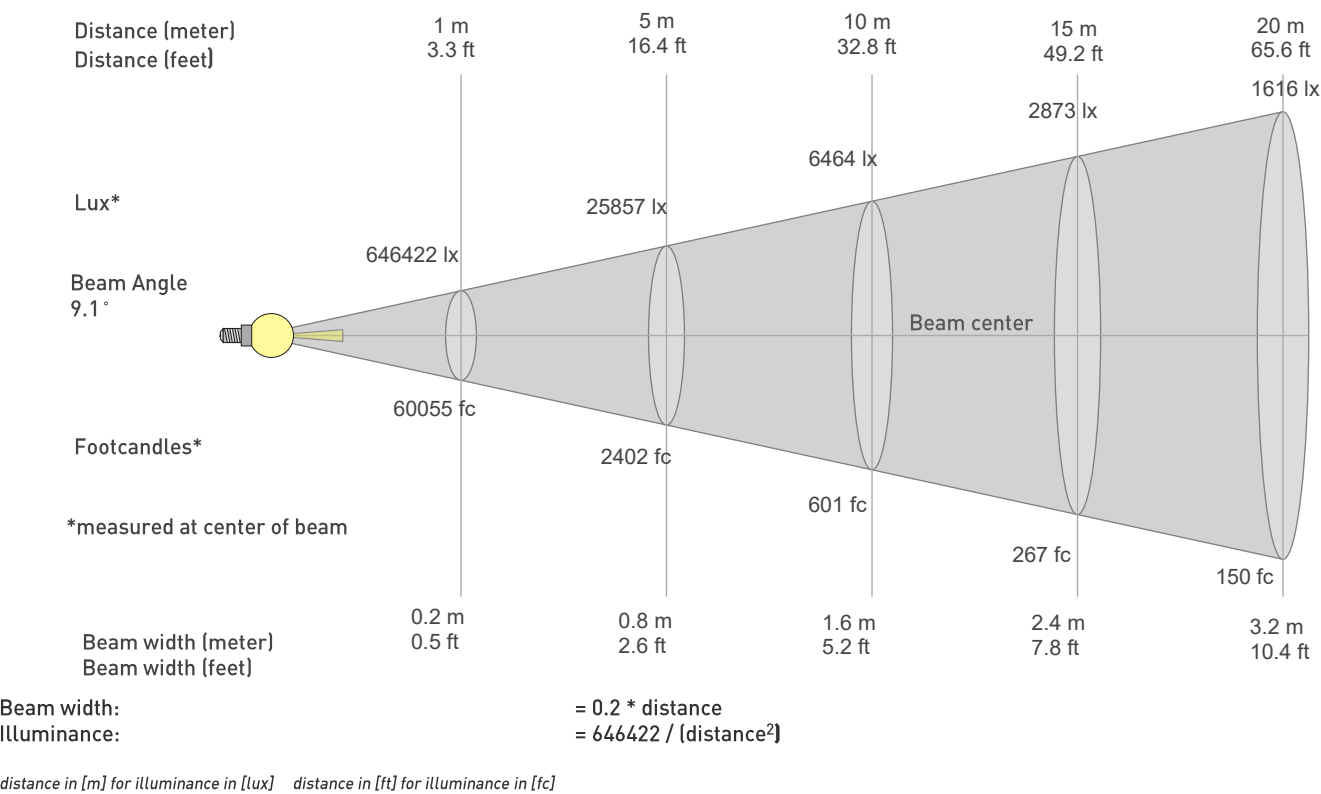
COLOR DISTORTION GRAPHICS



Photometric Report

MAC Encore Two – Narrow

BEAM DETAILS



BEAM ILLUMINANCE FROM 1-20M

1m	2m	3m	4m	5m	6m	7m	8m	9m	10m	11m	12m	13m	14m	15m	16m	17m	18m	19m	20m
3.3ft	6.6ft	9.8ft	13.1ft	16.4ft	19.7ft	23ft	26.2ft	29.5ft	32.8ft	36.1ft	39.4ft	42.7ft	45.9ft	49.2ft	52.5ft	55.8ft	59.1ft	62.3ft	65.6ft
646422lx	161605lx	71825lx	40401lx	25857lx	17956lx	13192lx	10100lx	7981lx	6464lx	5342lx	4489lx	3825lx	3298lx	2873lx	2525lx	2237lx	1995lx	1791lx	1616lx
60054.6fc	15013.6fc	6672.7fc	3753.4fc	2402.2fc	1668.2fc	1225.6fc	938.4fc	741.4fc	600.5fc	496.3fc	417fc	355.4fc	306.4fc	266.9fc	234.6fc	207.8fc	185.4fc	166.4fc	150.1fc

